



## Key Features

### Tailored Homes Standard

- 10 Years Master Builder Guarantee
- 2 Years Maintenance Period
- E-LOK 7-Series Digital Door Lock
- Methven Tapware
- Blum (Germany branded) Hinge for Kitchen Joinery
- Carpet Garage Floor
- BOSCH Appliance
- Engineered Stone Benchtop

### Special Design Feature

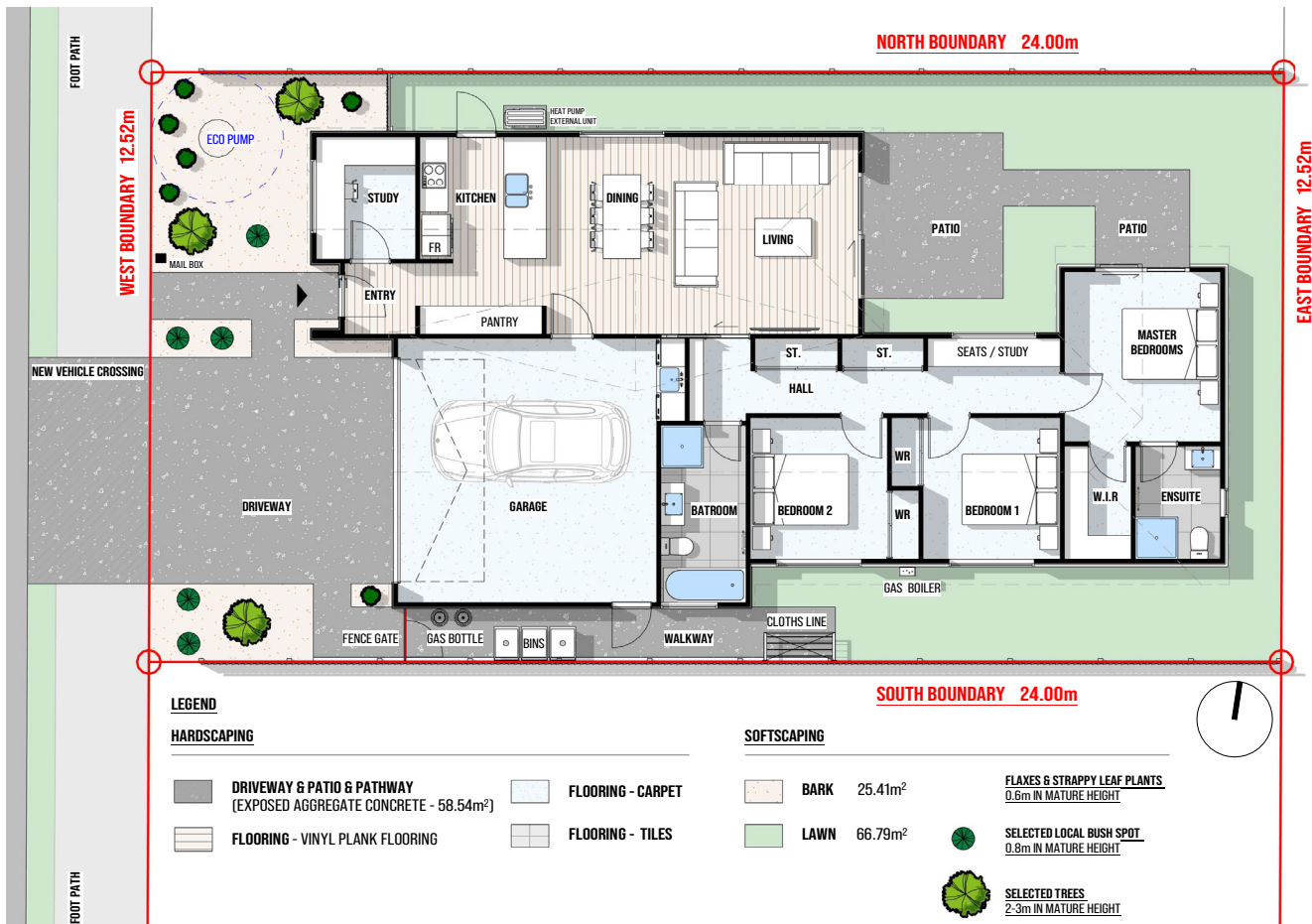
- ▶ Sunny Living Room
- ▶ Kitchen, Dining & living with Wooden Style Vinyl Flooring
- ▶ Study Room
- ▶ Sunny Bay Window
- ▶ Hallway End Feature Wall
- ▶ Walk-in Wardrobe
- ▶ Central Heating
- ▶ Expected Completion on December 2025



Trices Road, Prebbleton

LOT 39

Land Area: 301m<sup>2</sup>  
Building Area: 149.93m<sup>2</sup>



**LEGEND**

**HARDSCAPING**

- DRIVEWAY & PATIO & PATHWAY (EXPOSED AGGREGATE CONCRETE - 58.54m<sup>2</sup>)
- FLOORING - VINYL PLANK FLOORING

- FLOORING - CARPET
- FLOORING - TILES

**SOFTSCAPING**

- BARK 25.41m<sup>2</sup>
- LAWN 66.79m<sup>2</sup>

FLAXES & STRAPPY LEAF PLANTS  
0.6m IN MATURE HEIGHT

SELECTED LOCAL BUSH SPOT  
0.8m IN MATURE HEIGHT

SELECTED TREES  
2-3m IN MATURE HEIGHT

FLOOR PLAN

